

Ascentify eSuite

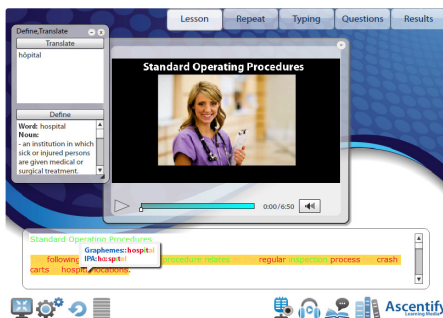
CLOUD-BASED TRAINING & ASSESSMENT PLATFORM FOR WORKFORCE DEVELOPMENT AND DIGITAL ENGLISH LEARNING



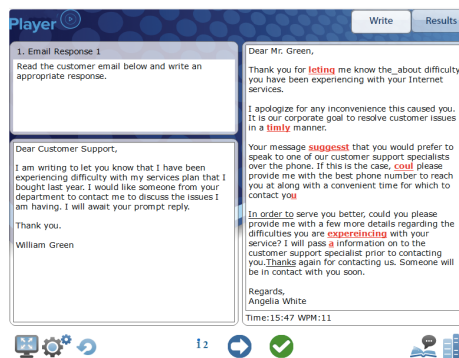
Ascentify eSuite combines job skills training with communications and language development. Our integrated assessment and training platform enables you to test, train, and audit a learner's progress from recruiting, to on-boarding, to on-the-job training.

The Ascentify solution enables you to develop e-learning activities that focus on improving: job skills, along with verbal & written communication, comprehension and judgment. You can leverage your own content to create authentic multipurpose training and testing activities.

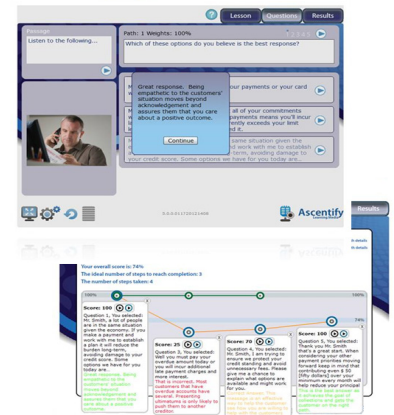
VERBAL COMMUNICATION



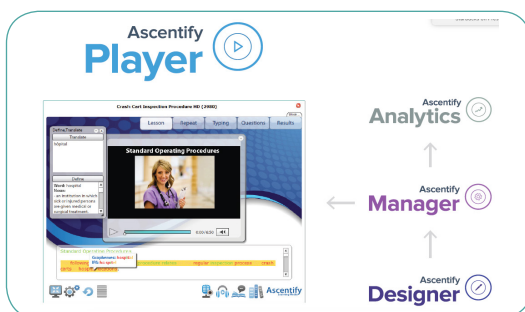
WRITTEN COMMUNICATION



COMPREHENSION & JUDGMENT



From a language and communications development perspective, other solutions teach the learner the basics using structured, pre-defined programs. The Ascentify solution significantly improves those skills by putting the learning experience in context. Through our Scenario capability, our customers can model real-life interactions in order to develop adaptive training lessons that deliver job related training in a way that simultaneously improves soft skills and reasoning.



eSuite consists of 4 main components: **Ascentify Designer, Ascentify Manager, Ascentify Analytics and the Ascentify Player.**

Ascentify Designer

- Incorporate real person-to-person interactions to develop training Scenarios that model real-life communications in order to enhance on-the-job training
- Combine job skills training with communication and soft skills development activities
- Develop training units that support Free-Form, Structured, Transcribe, and Type style writing activities
- Create new or leverage existing learning content – no programming required
- Every trainer can become a content creator

Ascentify Assess

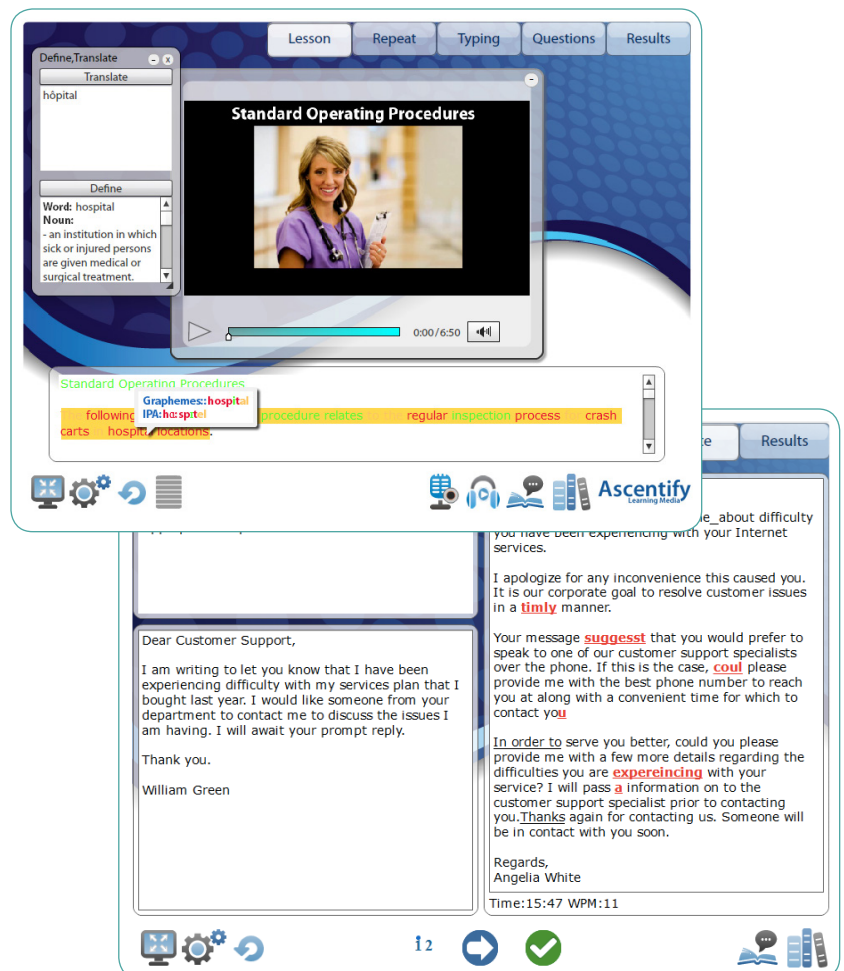
- Self-registration portal for candidate sign-up for either in-house or external recruiting
- Assess job, language (verbal, written, & comprehension) and soft skills
- Customizable to business requirements
- Language assessments calibrated to CEFR standards
- Unified testing and training application enabling instructors to access testing data in order to personalize training programs
- Results available immediately

Ascentify Analytics

- Enterprise level performance and detailed activity tracking
- Assessment reports that detail areas for improvement for verbal and writing skills
- Personal dashboards to monitor performance and progress
- Scenario report enabling the Learner to self-evaluate the model path with the course they took
- Personal language tutor to help with vocabulary and pronunciation

Ascentify Player

- Contextual feedback to reinforce learning objectives
- Scenarios to model interactions – improve comprehension & judgment
- Assessments to test domain knowledge
- Immediate pronunciation scoring and phonetic feedback using industry-leading, real-time, speech recognition technology
- Immediate feedback for writing-based activities on grammar, spelling, punctuation, style, and custom & explicit content to use or exclude
- Comprehension activities (Reading, Listening, Situational)
- Grammar & Vocabulary exercises
- Dictionaries and Translations
- Personal glossaries of words & sounds to improve with built in tutorials



The screenshot displays the Ascentify Player interface. At the top, there are navigation tabs: Lesson, Repeat, Typing, Questions, and Results. The main content area features a video player titled "Standard Operating Procedures" showing a woman in a hospital setting. To the left of the video is a "Define, Translate" window with a "Translate" section showing "hôpital" and a "Define" section with the word "hospital" and its definition. Below the video player is a text-based interaction scenario with highlighted words and phonetic feedback. The scenario includes a customer support email and a response. The interface also shows a progress bar for the video (0:00/6:50) and various control icons at the bottom.

FOR CONTACT CENTERS

Ascentify enables employees to enhance their job skills, improve their communications skills and develop their soft skills within the context of what's required for work. With our Scenario capability, Ascentify improves comprehension and ultimately judgment resulting in operational improvements in first-call resolution, reduction in call-handling times, and overall improvements in CSAT or NPS scores. Our solution has significantly enhanced the training and assessment process by helping to standardize evaluations, shortening the ramp-up times, increasing individual performance scores, and moving more agents to production.

FOR CORPORATE LEARNING

Ascentify enables Corporations to publish their training content (Compliance, Standard Operating Procedures (SOPs), Sales, Customer Service, etc.) in a format that improves their Learner's comprehension while at the same time provides for a rich training experience that enables international employees to improve their English communications skills with authentic content that is relevant to their job functions.

FOR SCHOOLS

Ascentify supports the design and deployment of high-volume reading intervention and language support programs for students of all ages and skill levels. Our skills-based approach focuses on the methods prescribed in the US National Reading Panel, the UK National Literacy Strategy, and the US DOE policies on bilingual education. At the core of our approach is a data-driven instructional model that works in helping students become better readers and speakers of English. The software can easily integrate with any curriculum or course management platform and enables educators or educational publishers to incorporate their own content.



Ascentify Learning Media Inc.
44 Byward Market Square
Ottawa, Ontario, K1N7A2, Canada

info@ascentify.com
t. +1.613.244.1115
f. +1.613.244.1116